

Greatham Parish Council
Parish Council Meeting
Greatham Village Hall
Wednesday September 11th 2024 at 7.30 pm

Dear Councillor,

You are hereby summoned to a meeting of Greatham Parish Council for the transaction of business set out below.

SJ Bartlett

Acting Clerk

5th September 2024

AGENDA

1. Chairman's Announcements

2. Apologies for Absence: To note any apologies received from Councillors

3. Declarations of Interest:

Councillors are reminded of their responsibility to declare any disclosable pecuniary interest which they may have in any item of business on the agenda no later than when that item is reached. Unless dispensation has been granted, you may not participate in any discussion of, or vote on, or discharge any function related to any matter in which you have a pecuniary interest as defined by regulations made by the Secretary of State under the Localism Act 2011. You must withdraw from the room or chamber when the meeting discusses & votes on the matter

4. Approval of Minutes: To approve minutes from the council meeting held on 10th July 2024

5. Update on previous actions arising from council meetings (Appendix 1)

6. Report from District Councillors: Report from Cllr Mitchell/Cllr Steevens (Appendix 2)

7. Report from County Councillor: Report from Cllr Russell Oppenheimer (Appendix 3)

8. Public Question Time: Adjournment of the meeting for 15 minutes to allow the public to raise questions

9. Parish Council Finances/Administration:

a) Payment Schedule: To approve current payment schedule. (Appendix 4)

b) Finance Report: To note the Finance Report for July and August 2024, and present the bank reconciliations for approval. (Appendix 5)

c) Clerks Report (Appendix 6)

10. To discuss the Survey for September village Magazine : Speeding and all associated topics. (Appendix 8)

11. To discuss the format and any content for the councillor drop in session on 28th September.

12. Community Bus funding update.

13. To discuss the village request for a Community Hub. (Appendix 7)

14. To Discuss the ongoing issue of water in the playground at the village hall, and possible solutions.

15. To discuss ongoing projects that the Parish Council can drive forward for 2024 – 2026.

16. To discuss the ongoing maintenance of the public footpaths and bridlepaths within the village.

17. To discuss how we plan the budget for 2025/2026, and next steps, including review of 2024/2025 budget and EMR.

18. To note reports from representatives of Organisations, Outside Bodies, Leads & Groups

19. Agenda Items for the next Meeting

20. Date of Next Meeting : 9th October 2024 @ 7.30 pm

Appendix 1 : Matters Arising

- The footpaths within the village are still a matter of concern to the residents. Discussions have taken place with RP Commercial Services (Lengthsman) to see what additional support they can provide. One footpath was recently completely cleared during a Lengthsman visit. The others will be looked at during September and October.
- The clerk spoke with both Liss and Liphook parish clerks, who were not aware of any discussion taking place regarding sharing a local plan. Once we have further information about what our neighboring councils are going to be doing, we can take a view on how we participate. At present there are other priorities for the parish council rather than move this forward on our own.
- The Parish Council are still working on getting one of our local police team to attend a meeting or the Councillor drop in session on the 28th September.

Appendix 2 : Report from District Councillors

None Received.

Appendix 3 : Report from County Councillor

COUNTY COUNCILLOR REPORT TO ALL PARISH COUNCILS IN PETERSFIELD HANGERS 2 SEPTEMBER 2024

1. Solar Together scheme returns!

The solar energy group-buying scheme promoted by Hampshire County Council is now in its third offer. Managed by independent experts iChoosr, the scheme enables residents to invest in solar panels

for their homes, fitted by pre-vetted installers. This can reduce reliance on the national grid and lower energy bills, as well as tackling climate change.

We would be very grateful for your support in promoting the scheme via your newsletters and social media channels please.

Through Solar Together, over 28,400 solar panels have already been installed in Hampshire. It is estimated that these installations alone will reduce carbon emissions by 59,205 tonnes over 25 years – equivalent to taking over 32,600 cars off the road during the same period.

Those interested need to register online at www.hants.gov.uk/solartogether by 18 October 2024 for a free and without obligation quote.

The scheme offers Hampshire homeowners a hassle-free way to make the switch to clean energy, ensures installation is cost effective and gives residents confidence in their decision. Registering your interest allows you to take advantage of the benefits of the scheme without committing to any agreement or purchase.

Participants who register will receive a complimentary quote that demonstrates their potential savings on energy bills through solar panel installation. They can also learn about the opportunity to earn extra income by selling excess energy to the National Grid. Additionally, participants have the flexibility to choose to include battery storage or electric vehicle charge points at the time of registration or when they accept their offer.

To participate in the Solar Together scheme, residents need to own the property or have permission from the property owner to install a solar system on the roof. Small- and medium-sized businesses and Commonhold Associations that meet these requirements can also participate.

2. Devolution in Hampshire

You may have seen reports in the local press about the possibility of a devolution deal for Hampshire. The new Leader of HCC Nick Adams-King has been meeting regularly with Unitary Authority Leaders from Portsmouth, Southampton and the Isle of Wight as well as the Leaders of all Districts and Boroughs in Hampshire. These discussions have been positive and an Expression of Interest was submitted to the Government last week.

The Secretary of State in charge of Local Government is now Deputy Prime Minister Angela Rayner MP. She has written to the Leader of Hampshire County Council and in that letter she has indicated the Government's intention to push ahead with a devolution deal for Hampshire. It is envisaged that this would be a pan-Hampshire deal.

The Secretary of State acknowledges that many areas have struggled to get devolution settlements over the line. The Government has promised to work with Hampshire to resolve those issues. A new National Devolution framework is expected to be published by the Government before the end of the year. We will need to scrutinise this carefully.

I believe that all local leaders in Hampshire appreciate that more powers and more funding have the potential to bring benefits for growth, skills, placemaking and frontline services in our great County. Resolving some of the current funding shortages will also bring benefits to Parish and Town Councils. I will continue to update you on developments.

3. Road repair update

Hampshire County Council has been hard at work fixing potholes and road defects.

From April 2023 to April 2024, we delivered a whopping 180,909 repairs – a 37% increase from the previous year.

Colder, wetter winters take a toll on roads everywhere. Plus, inflation means it now costs taxpayers around 44% more to repair a pothole. Nevertheless, thanks to an additional £22.5 million investment over two years, our highways service and main contractor, Milestone, have been able to deploy more resources to tackle these road issues promptly. Over £10m from the scrapped HS2 route is also now available to be spent on Hampshire roads.

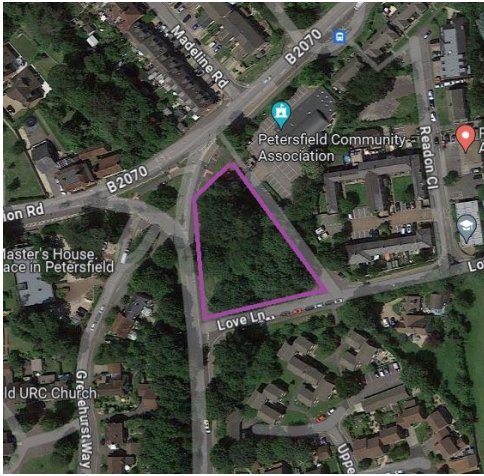
I think we are all acutely aware that the wet Summer has led to a lot of vegetation growth. In places, this impacts visibility and road safety. I am including a link below to the web page where you can report these vegetation visibility issues:

<https://www.hants.gov.uk/transport/roadmaintenance/roadproblems/treehedge>

Your support in flagging up these issues is much appreciated.

4. Love Lane Space for Nature

I would like to report on a project to improve biodiversity and reduce anti-social behaviour at the wood opposite the community centre, which I am calling “Love Lane Space for Nature”. This land is owned by HCC and is also known as Land at Tor Way. See below image for location.



As a former railway sidings, the site has heritage significance. But the site has been effectively abandoned since the Beeching cuts in 1960. The wooded area has become impenetrable as well as being a magnet for fly-tipping and drug-taking. Cherry laurel has regrettably proliferated; this is an invasive tree which poisons the soil because its berries and leaves contain a form of cyanide called prussic acid. It therefore poses a risk to native trees and to biodiversity generally.

A coalition of volunteers led by the Hampshire Monday Group has now come together with a view to removing the cherry laurel over the winter period. The objective is to protect the native trees and improve biodiversity by allowing more light into the wood. This project has support from HCC, EHDC and SDNPA. I hope that PTC will also agree to support the project. The volunteer coalition includes Hampshire Monday Group, Petersfield Men's Shed, Petersfield Community Association, the Physic Garden's Head Gardener and local residents on Love Lane.

Once the cherry laurel has been removed, the next stage of the project will be to undertake a habitat assessment and a biodiversity assessment. I am already in touch with the County Botanist about that. Once those assessments are done, consideration can be given to whether some limited access to the wood for people can be encouraged and facilitated in the future.

There may be remnants of the Midhurst Line which are unearthed during the winter works. If so, that could be interesting and I will involve all stakeholders (including the museum) in considering the best way to document and preserve the heritage features.

5. County Farms opportunities

I think it is really great that Parish Councils in Petersfield Hangers have such strong links to the farming community in your areas. Many of you also know young people who have been to Sparsholt College to develop farming skills.

I therefore thought it was worth sharing the list of farms currently available through HCC's County Farms scheme. These campaigns are generally run every 2-3 years. See below graphic:

New entrant starter farm opportunities available in Hampshire

Hampshire County Council
County Farms Service

We invite applications for the following equipped farm units:

 Dairy farm, c.128 acres near Winchester	 Mixed farm, c.18 acres near Fareham
 Livestock farm, c.129 acres near Winchester	 Livestock farm, c.85 acres near Hook
 Arable farm, c.104 acres near Fareham	 Dairy/livestock farm c.100 acres near Hook

To find out more about how to apply, just go to www.hants.gov.uk/countyfarms

Hampshire is not unique as a county in offering County Farm opportunities to new farmers, but have one of the most extensive county farm projects in the country, of which Hampshire County Council is rightly proud.

6. Hampshire Childrens Services rated Outstanding again

Supporting children and young people to get the best possible start in life and protecting those who are most vulnerable is one of our top priorities, so we're pleased to share that our Children's Services have once again been rated 'Outstanding' by Ofsted – the second time in a row.

Hampshire children and families who need extra help and protection continue to be supported by one of the few authorities in the country with outstanding rated Children's Services. Our dedicated staff continue to make a positive difference, despite the backdrop of growing demand and complexity in the needs of children.

Click on this link to learn more: <https://www.hants.gov.uk/.../20240723outstandingofstedresult>

7. South Downs Food Festival

The South Downs Food Festival will take place over the weekend of 14 and 15 September within the grounds of Stansted Park, near Rowlands Castle.

Visitors can browse the South Downs Market, which will feature artisan producers from across the region, and there will be an opportunity to try out local wines, beers, and gins. Activities will include a chef's table, apple pressing, ice cream making and how to build an outdoor oven.

Dame Prue Leith will be examining Elizabeth David's long-term influence on British food. Diane Purkiss, historian and author of *English Food (2022)*, will speak about Elizabeth David's historical significance alongside the writer Rachel Cooke.

Find out more and book tickets at www.southdownsfoodfestival.com

RUSSELL OPPENHEIMER
County Councillor for Petersfield Hangers

Appendix 4 : Payment Schedule

Invoice Date	Payee	Description	Net Total	VAT	Total
		Payments Made			
12/11/23	SLCC	FILCA qualification fee (expensed to SJB)	120.00	24.00	144.00
17/07/24	SLCC	ILCA qualification fee	120.00	24.00	144.00
13/11/23	SLCC	Joining Fee and Membership SJB(expensed to SJB)	70.00	0.00	70.00
31/07/24	Unicorn Restoration	Telephone box restoration materials	1220.83	244.16	1464.99
		Payments to be Made			
31/07/24	Reg White	St Johns Graveyard Maintenance July	168.00	0.00	168.00
31/08/24	Reg White	St Johns Graveyard Maintenance August	168.00	0.00	168.00

Telephone Box	£ 500.00
Kings Coronation	£ 500.00
Old Church	£4500.00
Defib Maintenance	£ 250.00
Bus Shelters	£ 250.00
Total Earmarked Funds	£12,370.00
General Reserves Balance	£19,595.34 (Total at Bank less Earmarked funds)

Appendix 6 : Clerks Report

- Meeting with The Taste Truck to discuss next steps and options.
- Planning meeting preparation, Agenda and meeting notes
- Discussion with Electricity team working in the village regarding Grass Verges.
- Managing Lengthsman visit and use of RP Commercial to clear footpaths around the village. Co-ordinating and briefing extended Grass cut in July.
- Follow up with External Auditors, provision of requested additional information.
- Completed the FILCA course and received certificate. Started studying ILCA course.

Appendix 7 : Community Hub Communication

Dear Ron and SJ

Apologies for a further email, but I realise I omitted to mention that it would be worth exploring whether either of the proposed developers could help fund the cafe/shop. I understand they usually allocate some funds for the village and the Apple Pie developers seem to be well disposed towards the village.

Good morning Ron and SJ

As you are aware SJ there is considerable support for a cafe at the Village Hall (including one or two of their committee). Sadly the taste truck rental is coming to a close, but it has demonstrated the need and an opportunity for a village social hub.

A group of us have put a petition together and would appreciate it if this could be raised and supported by the Parish Council at your next meeting on 11th September. We understand that the decision mainly lies with the Village Hall Committee but we are advised they have funds, so anything you can do to represent your village constituents in this would be most welcome.

I believe there are already a number of people who want to attend the meeting to support this

The petition already has over 100 signatories having only been set up yesterday - please see it and our request here <https://chnq.it/Jsk8HgMgxw>

Hello

I hope this email finds you well.

I am emailing to say what a pleasure it has been to have such a hub for the community down at the village hall in terms of Sherri and the Taste Truck.

The Taste Truck has provided a place for people to enjoy a hot drink and treat ,whilst getting to know people in the community.

The other day I saw a group of Dad's from the school chatting ,and supporting each other , and one had said thank you to Sherri for providing a place for him to find friends as he had been feeling very isolated and the chat had motivated him and those men had decided to meet up again because of the Taste Truck.

I was saddened to hear that Sherri and the truck will be gone soon.

As a stay at home mum ,and a military spouse it has provided me with a place to go after the school drop off ,a place where I can refuel whilst my toddler played in the park , a place where I learnt about the toddler group on a Monday and became a volunteer there , I went to Zumba because I was at the Truck and someone recommended the class , where I met other military mums, thus became a support network for when our husbands were away, we all attended the church Carol service by candle light , and we use the church facilities, play group etc.

I wanted to email to be heard , to have my say , The Taste Truck is so much more than what some people may think , its a safe place for people, where friendships have formed , the Army camp use The Truck as a wellness walk and coffees for their serving soldiers , the families up at the camp use this facility too.

Every park that I have visited in the South Downs has a shelter serving hot drinks ,food etc ,and with the new park this is exactly what Greatham needs for local families and for the community.

Please reconsider offering a built shelter for Sherri to work out of.

Thank you for your time

Dear Councillors,

Over the last year I've been a regular customer of Sherri's Taste Truck in Greatham. As a parent of two children at Greatham Primary School, I'm regularly in the much-loved new playground and the Taste Truck is a wonderful addition to this sociable spot in the village.

I'm saddened to hear that Sherri is giving up the Taste Truck in Greatham, but I understand that another winter in a temporary set-up is untenable. It is my understanding that Sherri has been in talks with Greatham Parish Council for some time to provide a permanent spot for her to trade from.

I'm surprised that after proving herself over the last year with the Taste Truck, she hasn't been offered a permanent spot. I'm writing to you today to ask you what else can be done to provide Sherri with a permanent set-up?

5 reasons to provide a permanent spot:

1. Sherri's truck has made the newly designed playground a sought after destination for young families. A brilliant playground is great, but a brilliant playground with coffee and cookies is gold dust. Something for the kids, something for the adults - everyone is happy.
2. Good food and drink has brought people together for centuries, and we've been lucky enough to have had this for the last year with Sherri's truck. Dog walkers, cyclists, parents, children and many members of the village (and visitors from beyond) have become regular customers who are now incredibly sad to see her go.
4. Sherri is Leith's trained - she's highly talented, energetic and ready to go. Please snap her up! She's already proved her ability with the truck, and is confident in delivering something larger with a permanent premises.
3. Caffeine withdrawal. Nobody wants that on their doorstep.

5. I overheard a group of men chatting by Sherri's truck the other day, coffees in-hand. One of them slapped another one on the back and said *"Thanks for the therapy session mate"* before they all broke into laughter and carried on talking. Lovely to see.

We have a bit of a gem in Sherri, so my question to you is what else can be done? What are the current hurdles and can we work together to overcome them?

Hi folks

Just dropping you a note in the hope you can help with something which feels very important to the community. I popped by the Taste Truck yesterday whilst the kids were on an epic park visit, and was really sad to hear that we're almost certain to lose this amazing village asset. Sherri has provided such an amazing community hub, and it would be a real shame to lose it because she can't operate fully through the winter months.

Hearing her talk about her ideas, there is so much potential for having some sort of shelter as a community cafe. Having been part of the PC, I know how important it is to create environments where people can come together, and Sherri has so many ideas to support those who really need it. It would be lovely to see her ideas come to fruition to save this brilliant community asset. Please could I ask that the PC and the VH trustees give some serious thought to how this can be supported?

Hi SJ

I am liaising with others in the village about developing something more permanent than the taste truck and keeping Sherri running it.

One thought is whether the Parish Council could work with the V Hall committee and approach the two developers for support for the project. The Apple Pie development maybe the more likely as at the public meeting they said they want to give back to the village - think it's called 'planning gain'

Some of us are asking for a meeting with Josh to urge him to agree a suitable building for Sherri to run the coffee shop in.

Do you think the PCouncil could help with approaching the developers?

There is a need for some urgency so we don't lose the truck at least keeping Sherri until we can get agreement for something

Appendix 8 : Traffic Issues within the village

Hi there, I wanted to bring up a topic (I think already been on) at the next parish council.

The road by the Pub has very few safety features by it and is used as a crossing for lots of the school kids from todmore and beyond.

I noticed that going down the hill visibility is ok, but going up the hill it's very bad and is compromised if cars park especially on the verge next to the pub just up the road.

I certainly did not feel safe crossing there with a 3 year old and I know a lot of the 8/9/10/11 year olds and beyond will be going to greatham or bohunt school will not think about it as much as an adult would (and a lot of cars rush through this section due to no safety sections there).

I wondered if there was anything on the radar for this?

Hi,

I wonder if at the next council meeting the suggestion could be put forward for additional traffic calming measures for the village in the form of speed bumps.

I would have thought that these would be a cheaper and more easily installed measure than the priority traffic systems , and are generally successful in slowing traffic.

I'm particularly thinking of the area from

Digby Way down to Longmoor Road. I live towards the bottom end of that stretch and have to say I am truly horrified at the speed of some traffic coming into the village and think it is surely only a matter of time until there is a serious incident.

Similar systems are in place in Clanfield and Haslemere if a reference system was required.

